



**CIVRO WINDOWS, DOORS AND FAÇADES SYSTEM**

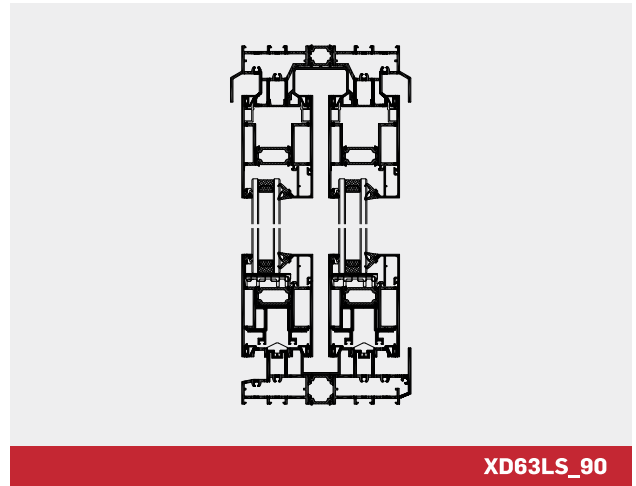
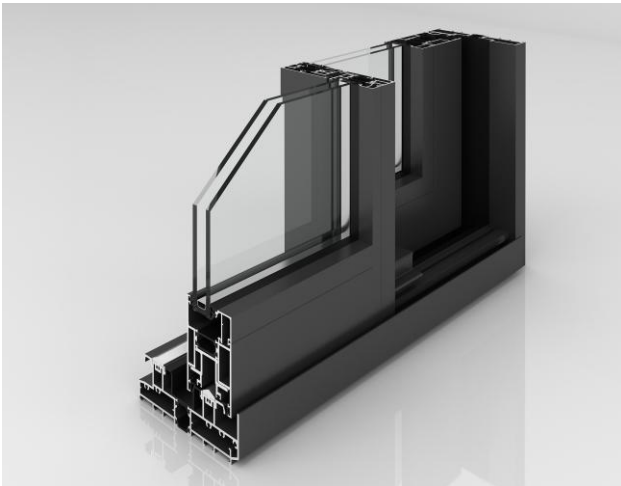
# **XD63 SLIDING SYSTEM**

# ONE SYSTEM, FOR EVERY BUILDING PROJECT!

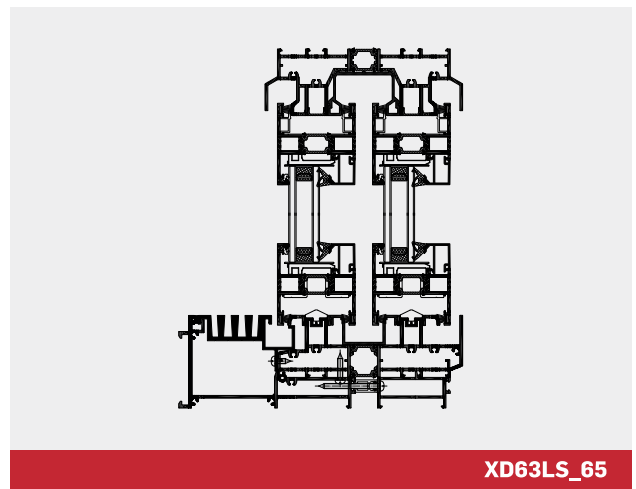
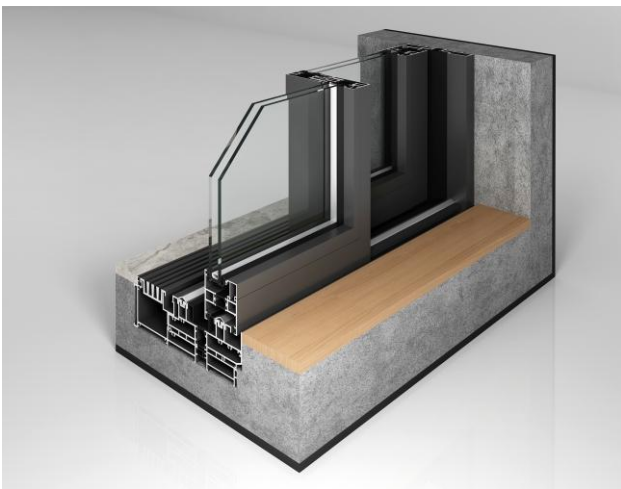
The modular and scalable CIVRO XD63 sliding system offers excellent waterproofing, slimline profiles, and comprehensive design and comfort solutions. With up to 4 design variants, it affords greater flexibility in planning. The system encompasses a range of product lines that are all at highest level. Additionally, features such as ventilation vent and integrated glass guardrail stand for more choices of configurations for this sliding system.

## PLANNING HIGHLIGHTS

- A remarkable water tightness of 800Pa, XD63 probably stands as one of the most water-resistant systems globally
- A slim face width of interlock section from 40mm with concealed side solution creates a maximum transparency vision and slender outlook
- Wide range of opening types including open corner variant, different profile options and additional add-ons (ventilation vent /integral glass guardrail) offer a large degree of flexibility in the planning stage and accommodate all clients and designers' special needs
- Customised concealed gutter provides better water performance, without adding thresholds
- Enjoy cool summer evenings without sacrificing your sleep with our flyscreen solution
- Wide range of attachments to building structure: best possible planning options including concealed drainage and concealed side
- A concealed track design ensures wheelchair-friendly access
- Certified RC2 anti-burglary class ensures the security
- The glazing bead is uniquely designed for indoor-side installation, preventing outdoor prying and simplifying interior side glass



XD63LS\_90



XD63LS\_65

# TECHNICAL PERFORMANCE

## PROFILE TECHNOLOGY

- Euro standard 6060 T6 profiles with main wall thickness of 2.2mm
- Basic depth 140 mm (double track) and 227 mm (triple track)
- Characteristic corner and butt joint connection technology for high rigidity of frames and sashes
- Reinforcement interlock section between the vents for enhanced structural intensity
- Exclusive MED (Matte Electro Deposition) coating gives the finest and smoothest tactile impression

## OPENING OPTIONS

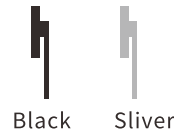
- Sliding, lift-sliding

## BURGLAR RESISTANCE

- EU standard RC2 security

## HARDWARE

- Heavy duty system hardware: max. vent weight: 400Kg (lift-sliding) with solid stainless steel track
- Ease operation due to special SLIM pulley assembly with "V" shape stainless steel rollers and optimised running carriage technology
- Tailored Europe-made CIVRO X-Line handle



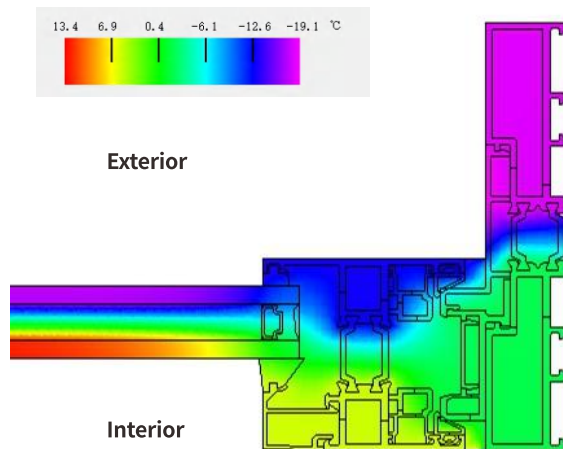
## THERMAL INSULATION

- PA66GF25 thermal insulating strip, C32+C22

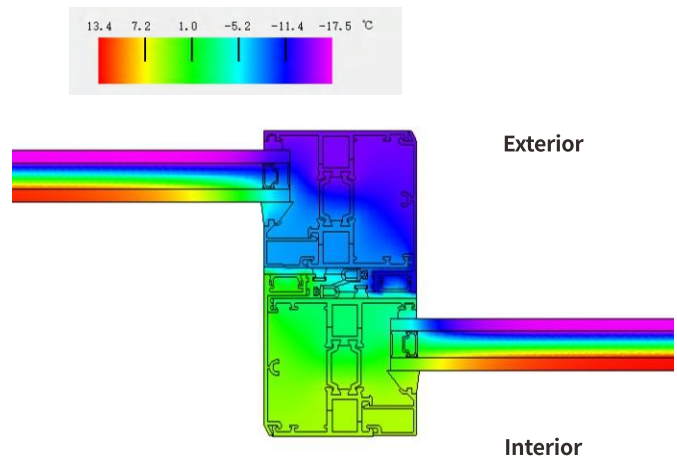
## ADD-ONS

- Ventilation vent
- Flush-fitted integrated glass guardrail
- Flyscreen

# THERMAL COMPUTATION



- **U<sub>g</sub>** 1.062W/(m<sup>2</sup>·K)
- **Glass type** 6G+12Ar+6G Double Silver Low-E (warm edge spacer)
- **Thermal insulating strip** C32+C22



- **U<sub>g</sub>** 1.062W/(m<sup>2</sup>·K)
- **Glas type** 6G+12Ar+6G Double Silver Low-E (warm edge spacer)
- **Thermal insulating strip** C32+C22

# OVERVIEW OF XD63 SLIDING SYSTEM

	XD63LS_90	XD63SS_90	XD63LS_65	XD63SS_65
<b>DESIGN</b>				
Opening	Lift-sliding	Sliding	Lift-sliding	Sliding
Min.-max. basic depth(mm)	140-227	140-227	140-227	140-227
Vent depth(mm)	63	63	63	63
Face width of interlock section(mm)	95/40	95/40	70/40	70/40
Face width of vent frame(mm)	91	91	66	66
Face width of meeting stile(mm)	192	192	158	158
Face width of top outer frame(mm)	50	50	50	50
Face width of bottom outer frame(mm)	22	22	22	22
Min.-max. face width of mullion(mm)	Vent: 0-90 Frame: 0-26	Vent: 0-90 Frame: 0-26	Vent: 0-65 Frame: 0-26	Vent: 0-65 Frame: 0-26
Threshold height(mm)	50	50	50	50
Reinforcement interlock section	■	■	■	■
Single track	■	■	■	■
Double track	■	■	■	■
Triple track	■	■	■	■
Concealed track	■	■	■	■
Concealed drainage	■	■	■	■
Ventilation vent	■	■	■	■
Integral glass guardrail	■	■	■	■
Fly screen	■	■	■	■
Surface finish	MED, powder coating	MED, powder coating	MED, powder coating	MED, powder coating
Fixed lights	■	■	■	■
<b>VENT DATA</b>				
Min.-max. vent height(mm)	2200-3000	2200-3000	2200-3000	2200-3000
Min.-max. vent width(mm)	800-3000	800-3000	800-3000	800-3000
Max. vent size(m <sup>2</sup> )	8	8	8	8
Max. vent weight(Kg)	400	360	400	360
Min.-max. glass thickness(mm)	Regular(90mm interlock section): 9-39 Slim(40mm interlock section): 14-39	Regular(90mm interlock section): 9-39 Slim(40mm interlock section): 14-39	14-39	14-39
<b>IMPLEMENT SCENARIO</b>				
Façade insert unit	■	■	■	■
Conservatory insert unit	■	■	■	■
Balcony enclosure	■	■	■	■
<b>PARAMETER</b>				
U values in W/m <sup>2</sup> k	1.7	1.7	1.7	1.7
Sound reduction(dB)	35	35	35	35
Air permeability(m <sup>3</sup> /(m.h))	0.2	0.2	0.2	0.2
Water tightness(Pa)	800	800	800	800
Wind load resistance(KPa)	≤5	≤5	≤5	≤5
Burglar resistance	RC2	RC2	RC2	RC2

# SINCE 1993

CIVRO has accumulated over 30 years of experience in the research, development, and production of system doors and windows. Embracing the pioneering concept of global system doors, windows, and curtain walls, CIVRO adapts to the diverse and complex climatic conditions represented by China, covering usage habits across multiple dimensions. Upholding the integrated principles of safety, environmental protection, sustainable development, and aesthetics, Civro is committed to providing superior design inspiration and higher architectural value for global architects, designers, developers, and property owners. It aims to create personalized architectural facade system solutions for global landmark buildings and elite circles, establishing itself as a leading brand in global architectural facades.



## CIVRÖ GmbH

Schweinfurter Str. 7, 97080 Würzburg, Germany

## CIVRO Building Technology(Guangdong)Co.,Ltd

3<sup>rd</sup> Floor, Nanhai Dali Aluminium Building, Lingnan Road, Foshan, China

■ [www.civro.com](http://www.civro.com)

CIVRO Dubai | CIVRO Singapore | CIVRO Japan | CIVRO Vietnam & More



Facebook



Official Website



LinkedIn

### Note:

All product catalogs and planning data such as product parameters and performances, detailed drawings, attachment to building structure drawings and CAD drawings, which you obtain from our website, digital centre, franchisers or other channels and which you can save to your computer, are examples which are intended to help you plan and design your project. These contents must be checked for its suitability in the relevant structural scenario. The technical and legal regulations, the site conditions, and the design and structural requirements, must be assessed and planned independently by the developer and observed by the company contracted to do the work. Data or descriptions in these documents may be modified or amended due to technique improvement or design optimisation. **PLEASE BE AWARE OF NECESSITY OF PRE-CHECK TO AVOID ANY MISUNDERSTANDING OR PLANNING LOSE.**